

IKO

experts in **MOTION**

Precision Positioning Tables

Motion
Link Ltd

SYSTEMS IN MOTION

CAT-5796UKML



Visible Air *Invisible Limitation*

IKO Precision Positioning Tables from **Motion Link Ltd**

IKO Precision Positioning Tables are the products developed by merging the technology of Linear Motion Rolling Guides fostered for many years and the most advanced micro electronics technology together.

IKO Precision Positioning Tables are widely used as high-performance positioning mechanisms in not only various measuring instruments, work machines and assembling machines, but also in the most advanced liquid crystal/semiconductor manufacturing systems, etc. Their excellent performance has been verified in such highly demanding fields.

Precision Positioning Tables	3
Super Precision Positioning Tables	5
High Rigidity and Large Load Capacity Table	6
Linear Motor & Nano Linear Tables	7
Alignment Stages	9
Compact Tables	10
Precision Elevating Tables	12



TU

Precision Positioning Table



CAT-1562E

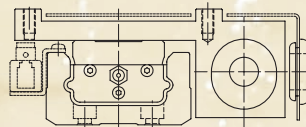
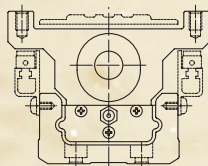
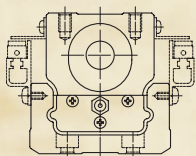
Making your action more precisely



This series comes in eight sizes with a track rail width ranging from 25 mm to 130 mm. For each of them, slide tables with different lengths are available. Also, the type and lead of ball screw, motor type, sensor installation and X-Y stage assembling can be selected to obtain the optimal positioning table for each specific application. The low profile type is newly available.

Available table width:

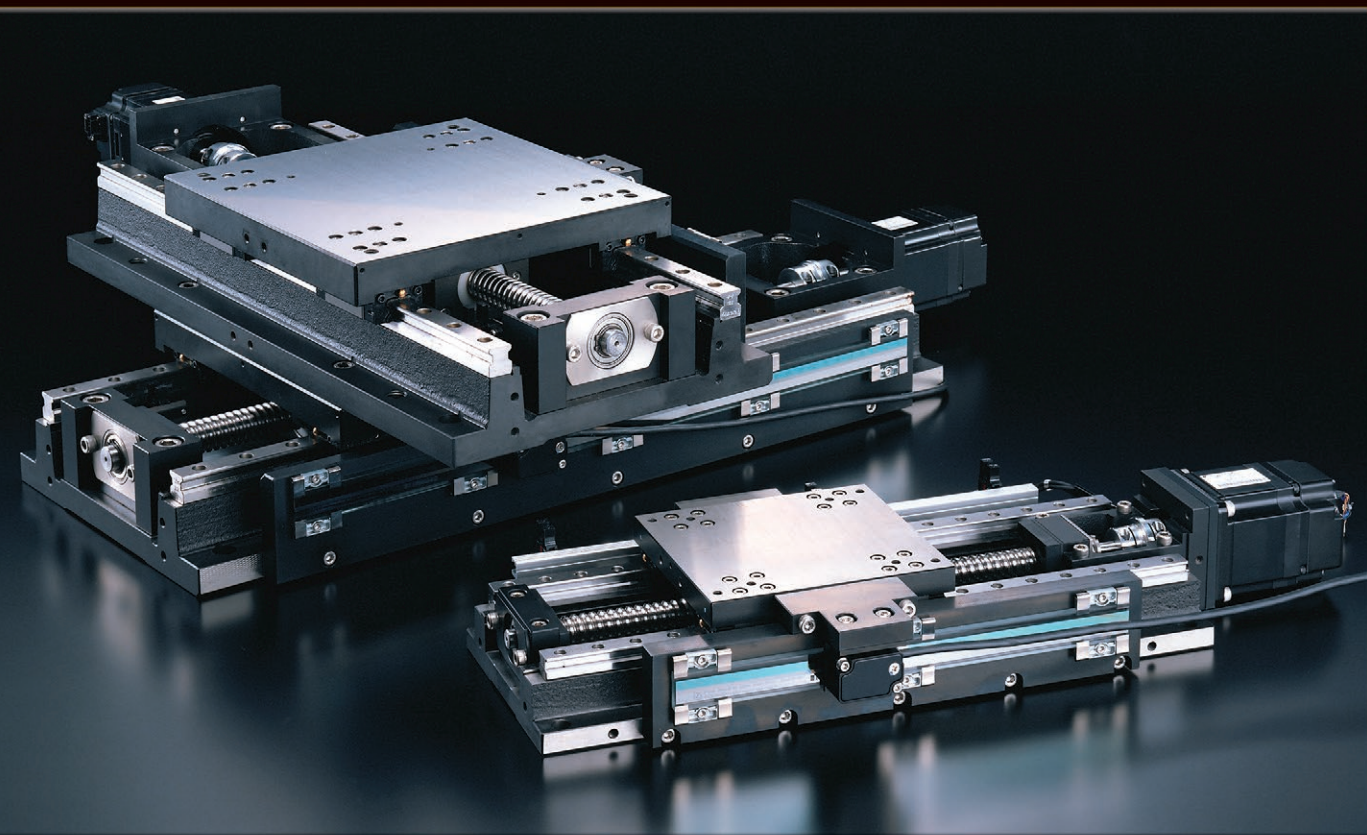
25 mm to 130 mm



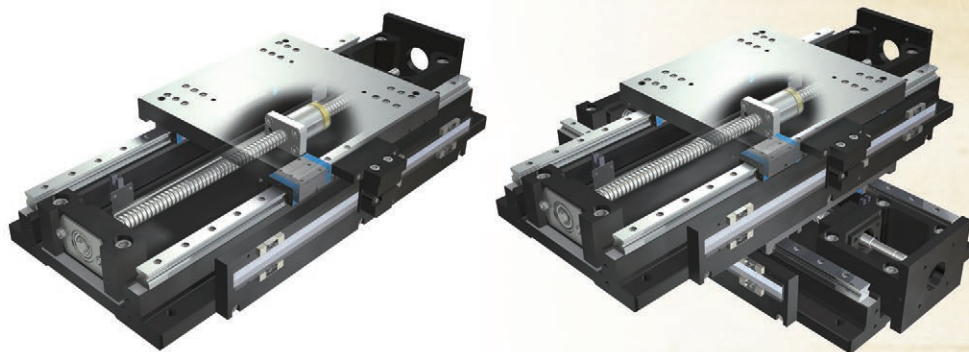


TX & CTX

Super Precision Positioning Table



CAT-1562E



1 High reliability and stability against fluctuating load

— High rigidity and high load capacity are realized by incorporating Linear Roller Way Super X on rigid body of cast iron. Deflection level against load and mass can be minimal and high stability operation is promised even under fluctuating load.

2 Use in vacuum condition

— Possible to use in vacuum environment in that air slide could not be used as its air gave negative affection. Can be supplied with vacuum environment grease on request.

3 For clean room application

— Low dust generating clean grease is available as an option.

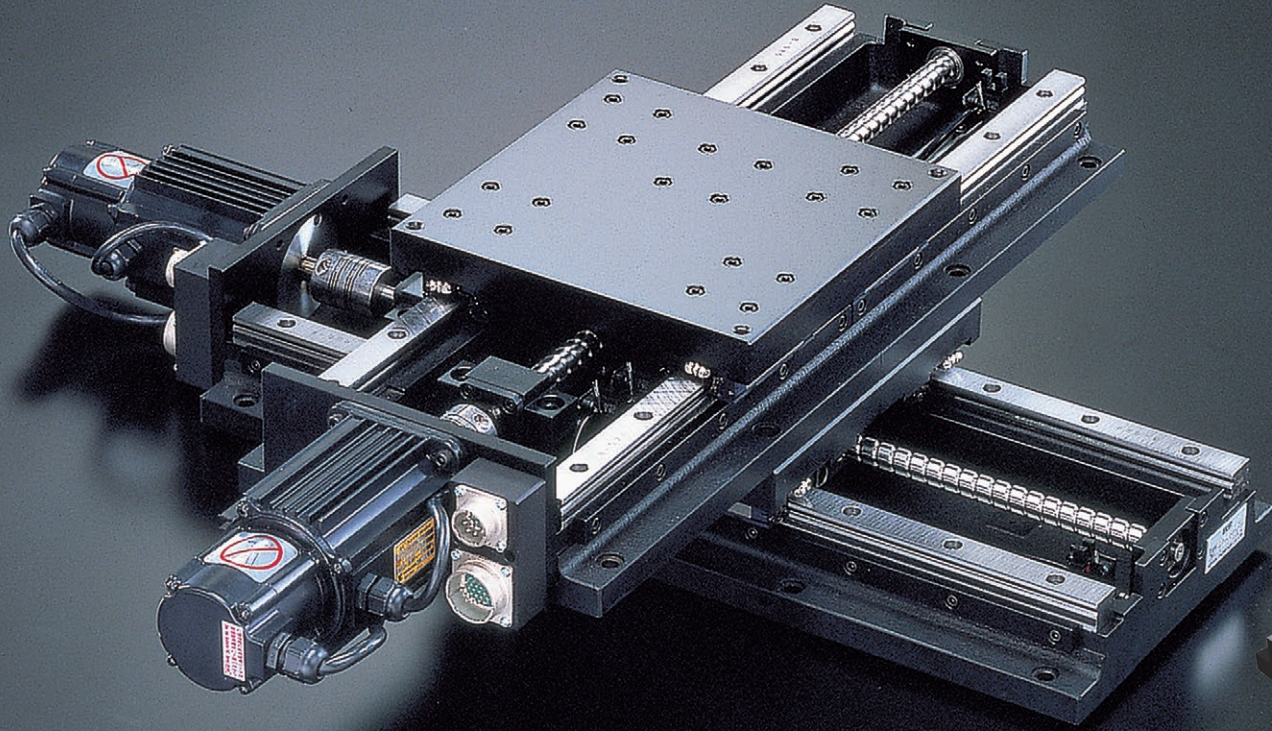
4 Simple construction

— System configuration can be very simple since this positioning table does not require air-supplying equipment which is necessary for air slide, and helps saving space and cost.

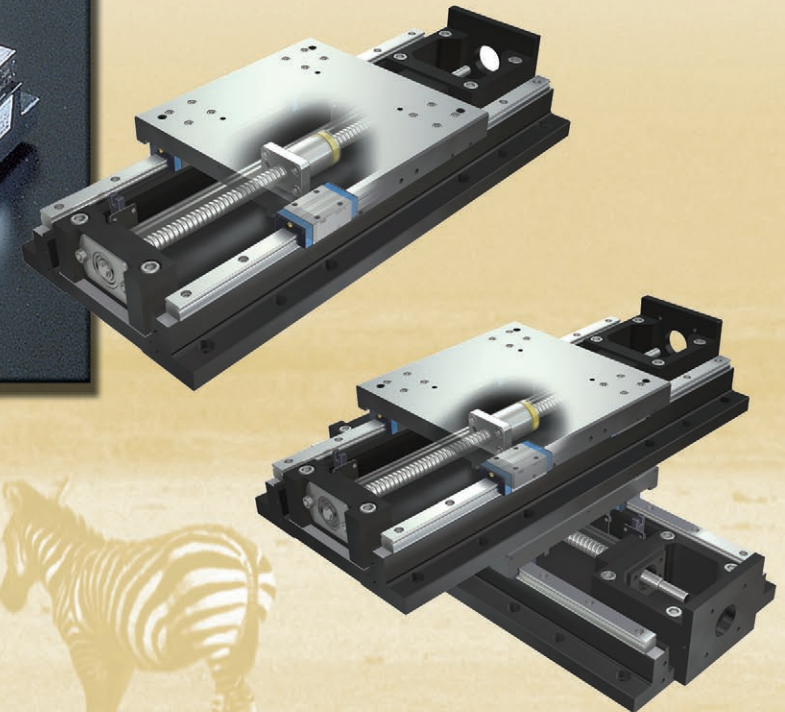
IKO TX is a Super Precision Positioning Table realizes super high running accuracy and high load capacity by incorporated **IKO** Linear Roller Way Super X as it guidance component. Epoch-making 5-micron meter of positioning accuracy is possible by full-closed-loop control system. This series is suitable to the application where high level of running accuracy is required and conventional rolling type positioning table cannot be used.

TSLH & CTLH

High Rigidity and Large Load Capacity Table



High rigidity and large load capacity series includes the super large size with a table width of 420 mm. The cast iron body performs superior damping characteristics. Single axis TSLH and X-Y axes CTLH provide stable and high running accuracy and positioning, as well as high load capacity.



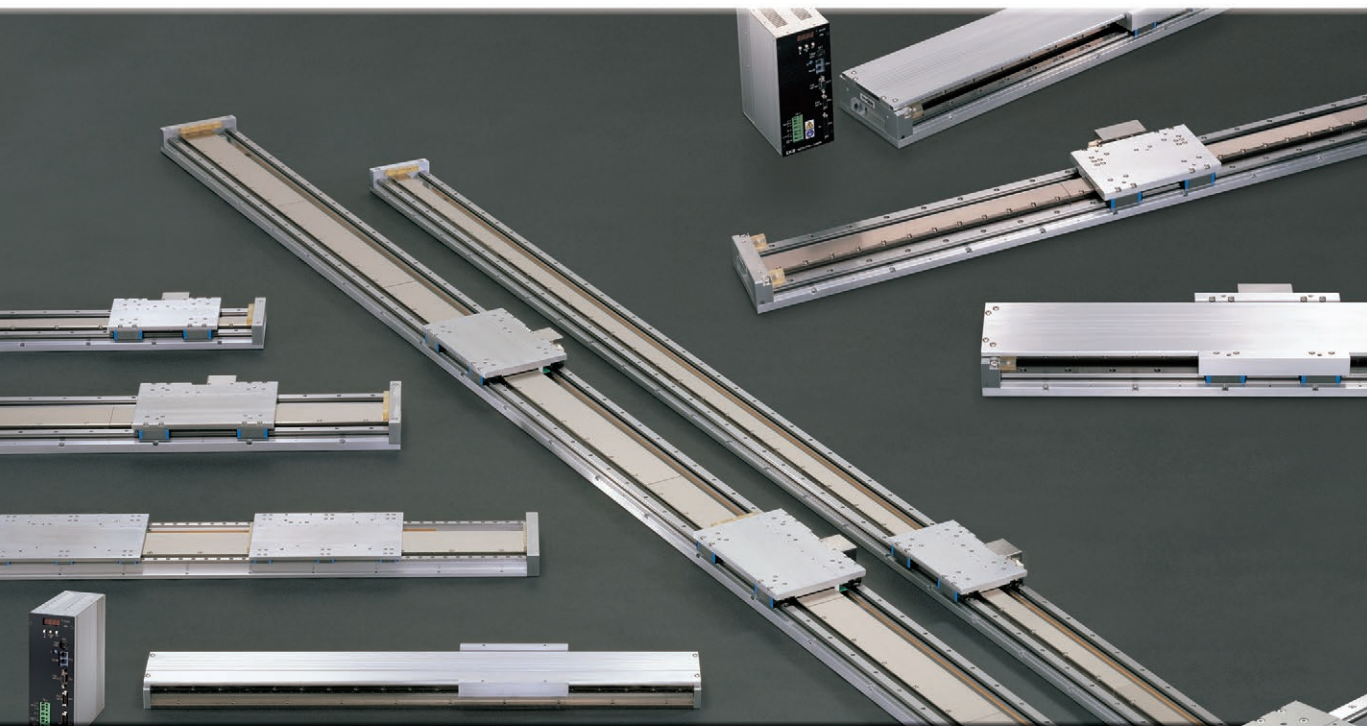
CAT-1562E

Vision is the art of seeing the invisible



LT

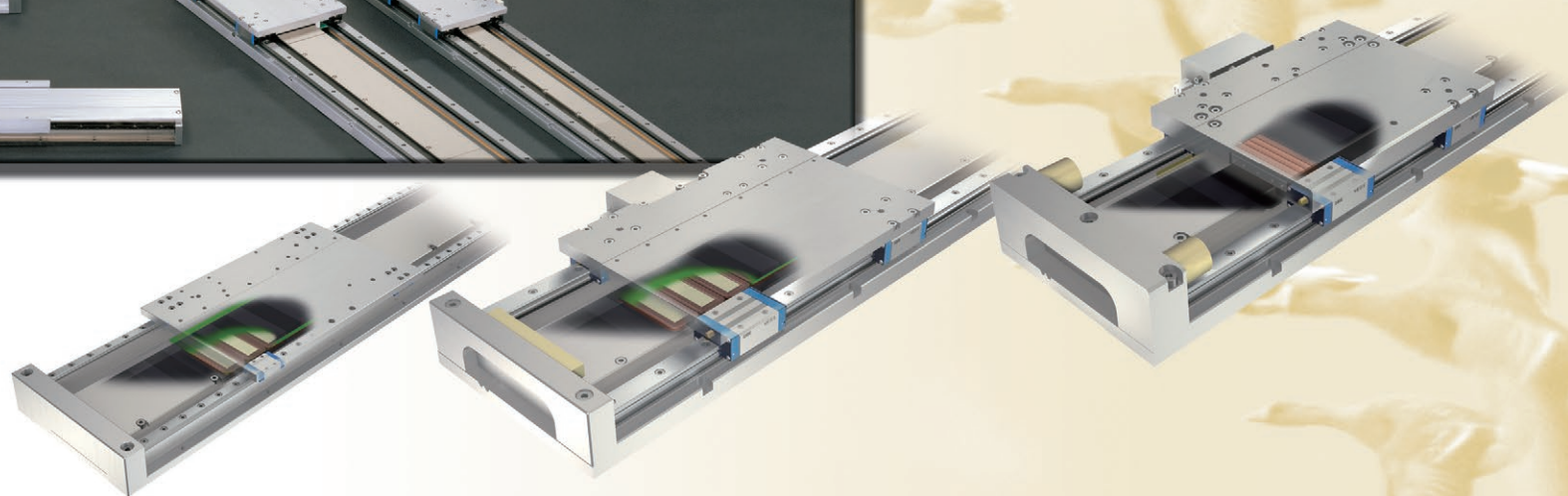
Linear Motor Table



Linear Motor Table LT is a direct drive positioning table featuring a low sectional height and light weight. An AC linear servo motor and an optical linear scale are compactly integrated in the moving table and bed made of aluminum alloy. Linear Motor Table LT, adopting a C-shaped magnet yoke arrange in-between two stator magnets together with a moving coil, provides large driving force and achieves high speed and quick response positioning.

Height of table : 40 mm
Maximum stroke length : 2760 mm
Maximum speed : 3 m/sec
Maximum thrust : 900 N

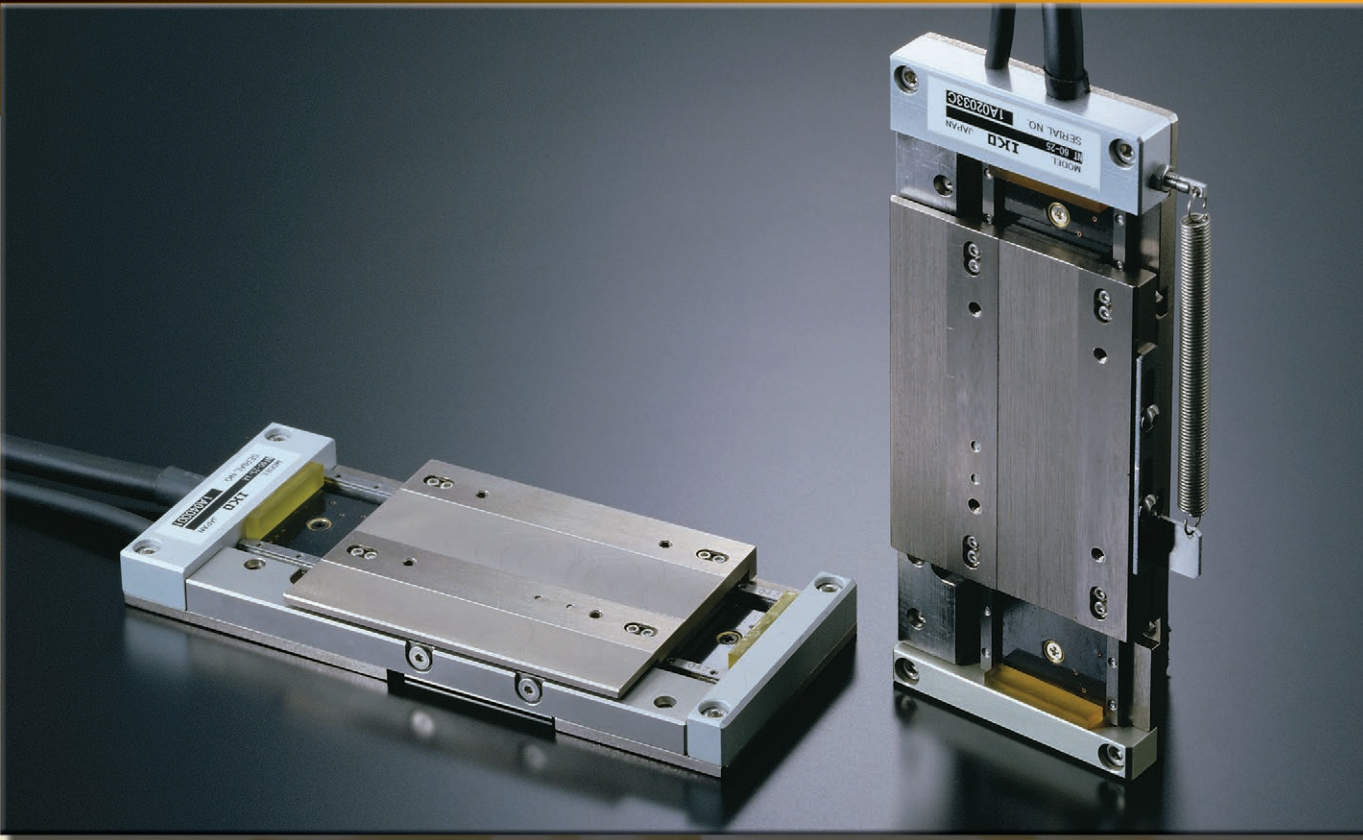
CAT-1562E





NT

Nano Linear



Nano Linear NT incorporates moving magnets and an optical linear scale in the steel moving table that also functions as a magnet yoke, and arranging stator coils and a linear scale sensor compactly as a unit on the steel bed that also functions as a coil yoke. It has an epochal structure requiring no moving cable since the linear scale sensor is arranged on the bed side, and provides high clean performance.

- 1 Ultra compact size with a height of 14 mm
- 2 Excellent clean performance
- 3 Super acceleration/deceleration and quick response
- 4 Superior rest stability and speed stability

CAT-1562E



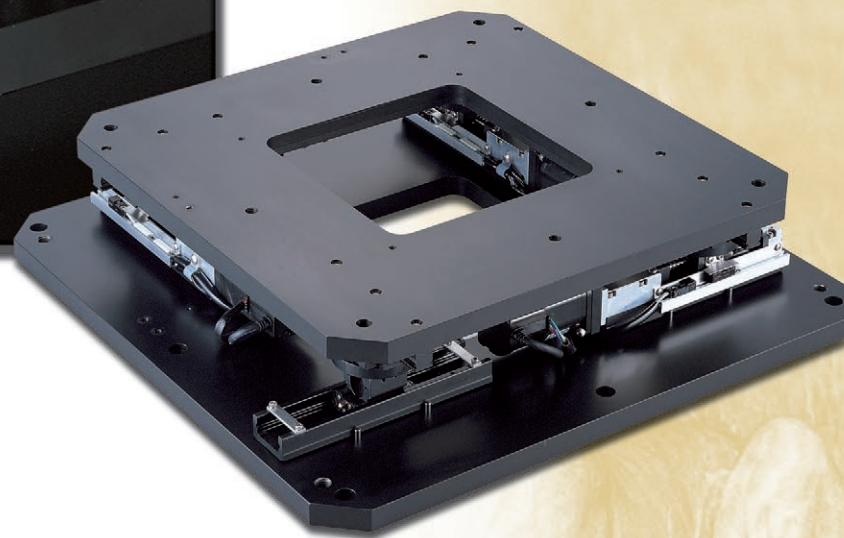


SA-M

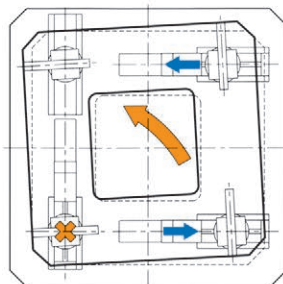
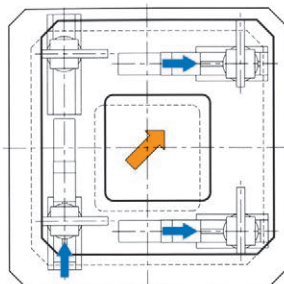
Alignment Stage Module



This is a low profile and large platform precision positioning stage, which alignment modules are arranged at four locations on the same plane as angle alignment mechanisms. This stage can perform X-Y- θ motion, and is suitable for a large panel alignment with high rigidity.

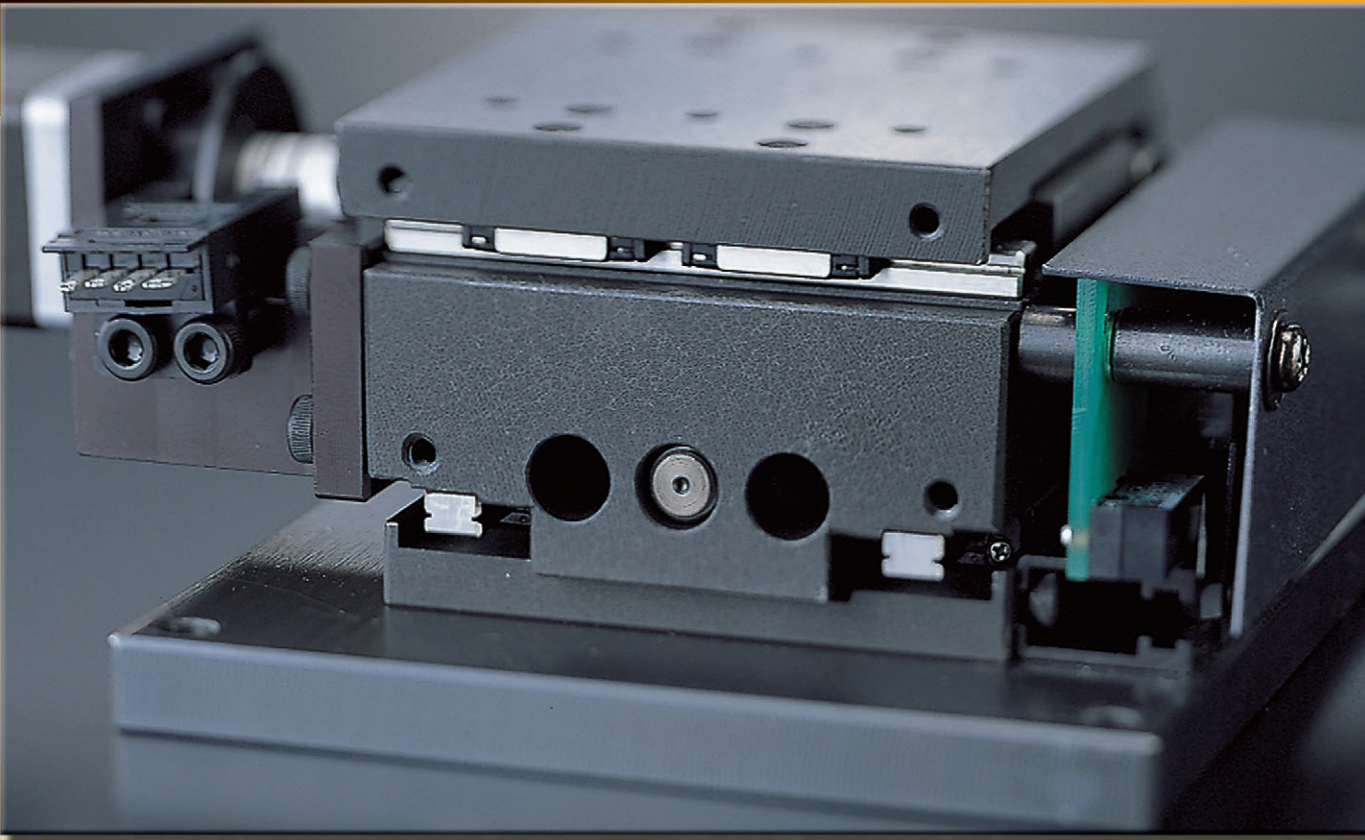


CAT-1562E



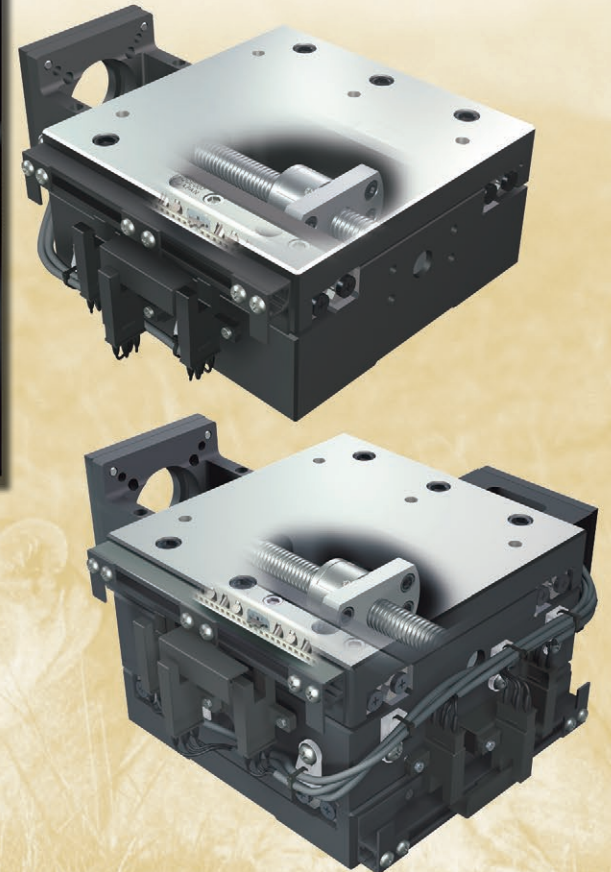
TS & CT

Compact Table



CAT-1562E

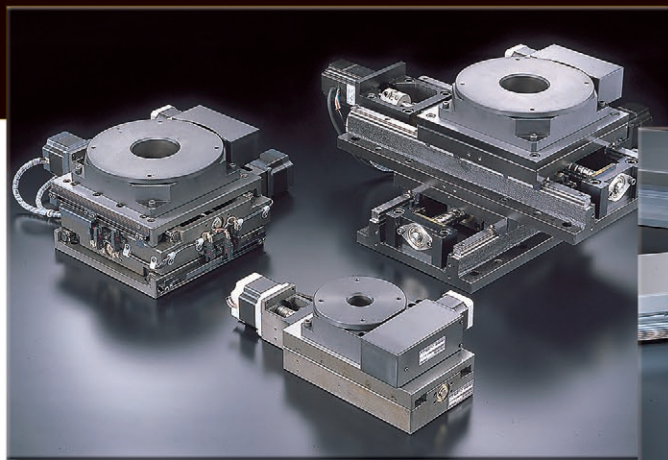
Compact tables with low sectional height of 40 mm has been newly released. High performance **IKO** Linear Motion Rolling Guides is assembled into the main body made of cast iron with superior rigidity and excellent damping characteristics. Positioning accuracy of 5 micron meter is possible.





AT

Alignment Table



CAT-1562E

This is most suitable for the usage of precision angle correction mechanism. Sensors are provided as the standard specification and very high repeatability (± 1 sec.) is achieved. Table diameter of 120 mm, 200 mm and 300 mm are now available.



TC

for Clean Room



CAT-1562E

This is the best choice for usage when the environment requires high cleanliness, for example, semiconductor manufacturing equipment and liquid crystal related equipment. Clean class 2 or 3 (Federal standard 209D Class 1) has been achieved.

Slim and Super-tight-sealing type

Cleanliness level
JIS class 2 **TC···US**

Wide and High-rigidity type

Cleanliness level
JIS class 3 **TC···U**

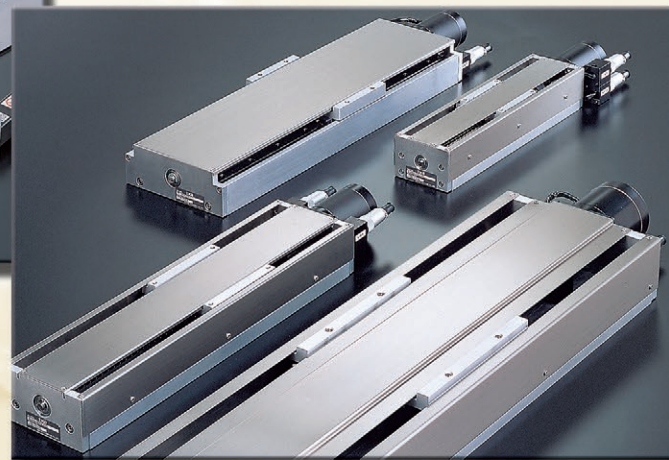
Wide and Full-covered type

Cleanliness level
JIS class 3 **TC···L**



TSL···M

Long Stroke Precision Positioning Table

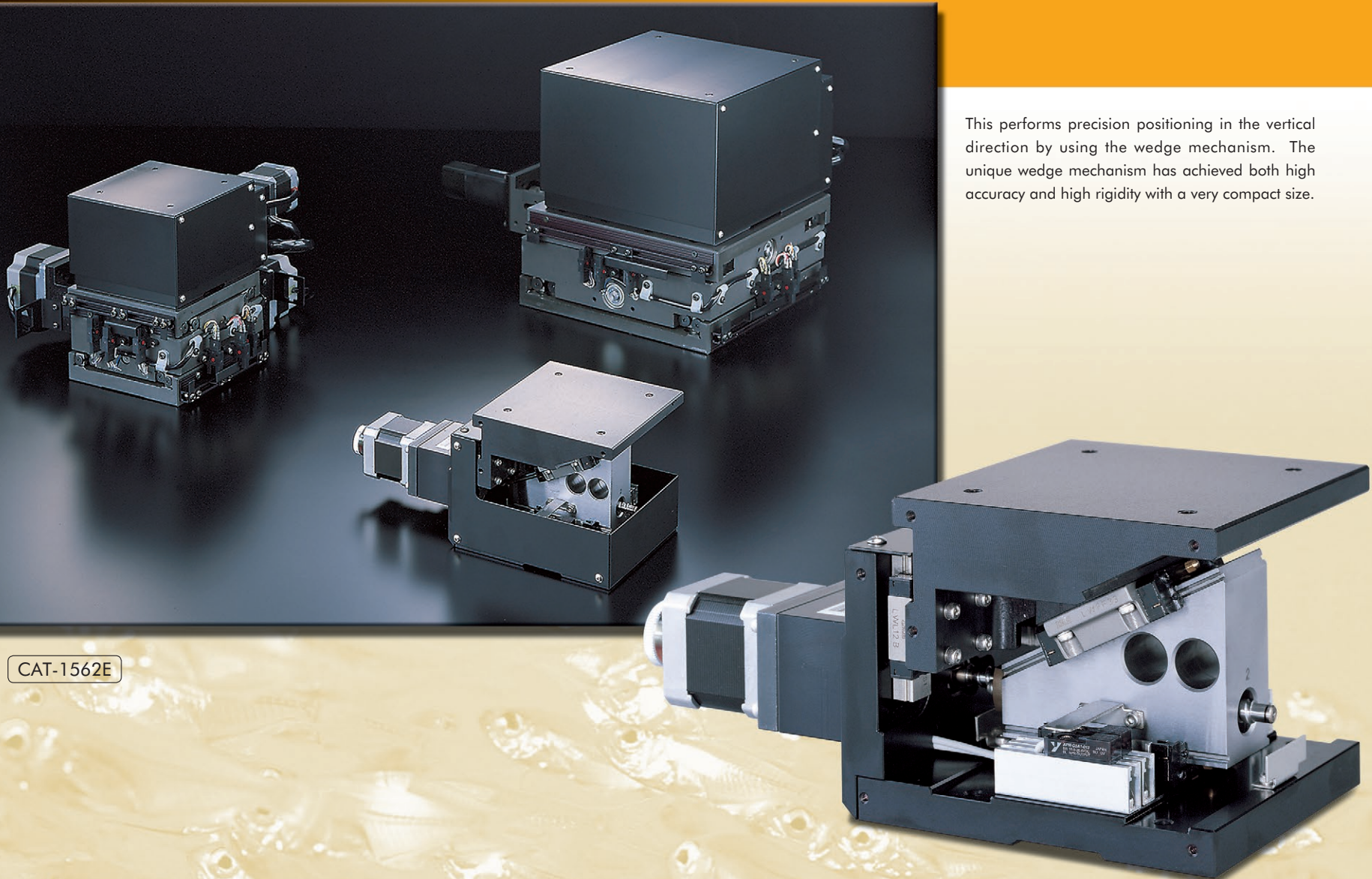


CAT-1562E

High running accuracy is achieved by incorporated two sets of Linear Ways in parallel. A slide table and a bed made of a high-strength aluminum alloy are used for reducing the total weight. Stroke lengths up to 1,000 mm are available.



Precision Elevating Table



This performs precision positioning in the vertical direction by using the wedge mechanism. The unique wedge mechanism has achieved both high accuracy and high rigidity with a very compact size.

CAT-1562E



Motionlink Ltd

Weston Farm Barn
Weston
Berkshire
RG20 8JA

Tel : +44 (0)1488 638 488
E-mail: sales@motionlink.co.uk

www.motionlink.co.uk