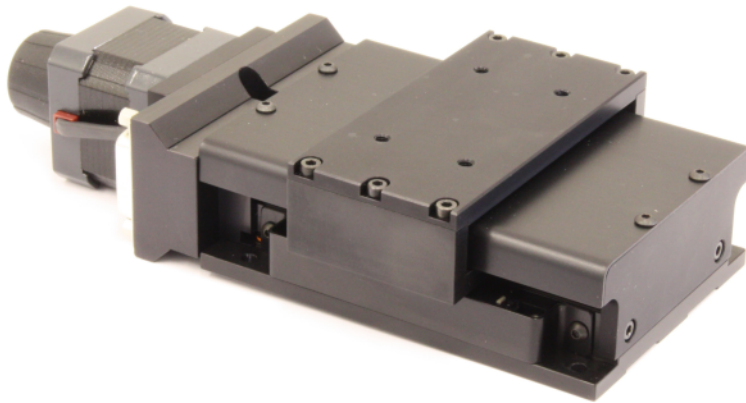


Series 3500 Miniature rail

Based on the popular series 3000 stage, the series 3500 is a compact design with miniature rail bearings, G0 1mm pitch ground ballscrew and is available with travels from 25 to 100mm. With a robust cover protecting the ballscrew and rail bearings, the series 3500 linear stage offers a stable and accurate solution to many positioning requirements.

It is possible to specify either 17 frame size stepper motors or small servo motors with attached encoders, offering resolutions to 0.1µm or better.

Integrated mechanical datum and limit switches are common to all models and connections are made by way of a 15Way D Type connector.

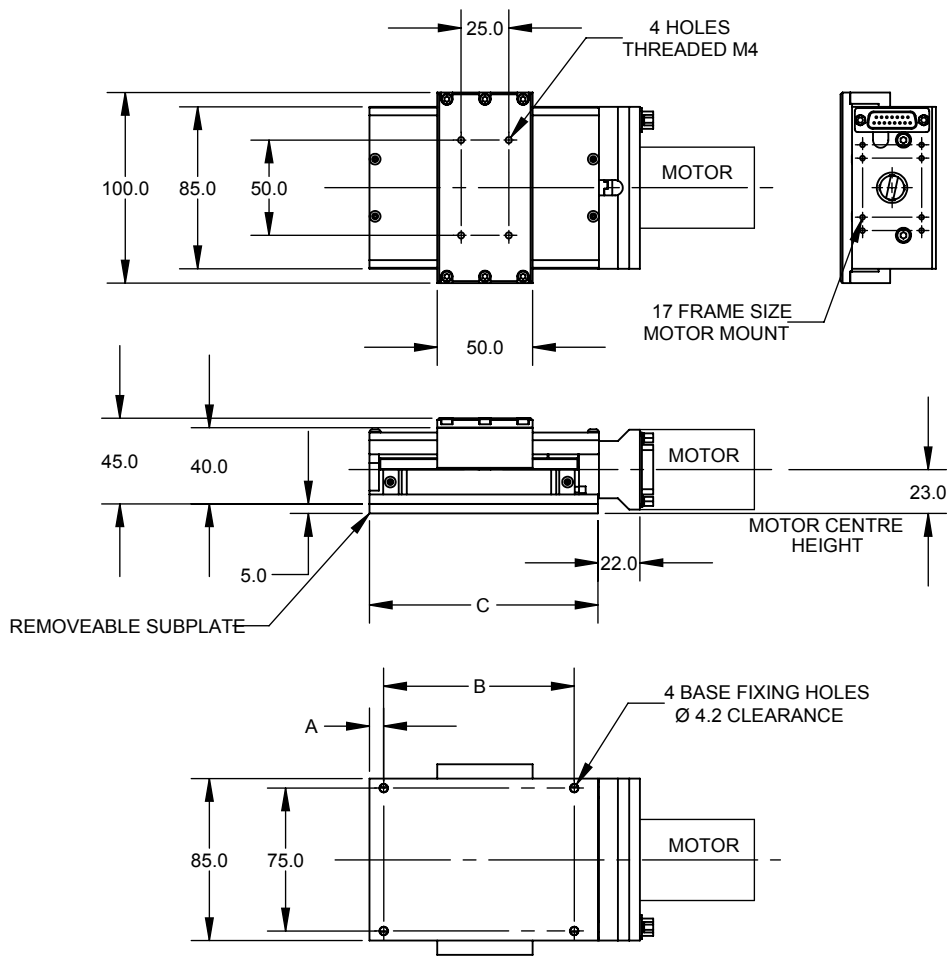


OPTIONAL FEATURES

- Leadscrew version available
- Special travels available
- X, Y and Z bracketry, standard or custom

SPECIFICATION

Travel mm	25	50	75	100
Ballscrew Drive	G0, Precision Ground, 1mm pitch			
Accuracy	2µm per 25mm travel			
Resolution	1 µm (subject to control)			
Flatness and Straightness of travel	+/- 1µm per 12 mm of travel			
Bi-directional repeatability	+/- 1 µm			
Load Capacity (kg)				
Stage Horizontal	10	10	10	10
Stage Vertical	4	4	4	4
Weight (kg)	0.6	0.65	0.7	0.75
Materials	Aluminium Alloy and stainless steel			



DIMENSIONS

Max Travel (mm)	Dimensions (mm)		
	A	B	C
25	7.5	75	95
50	7.5	100	120
75	7.5	125	145
100	7.5	150	170

For connections, see page 38