

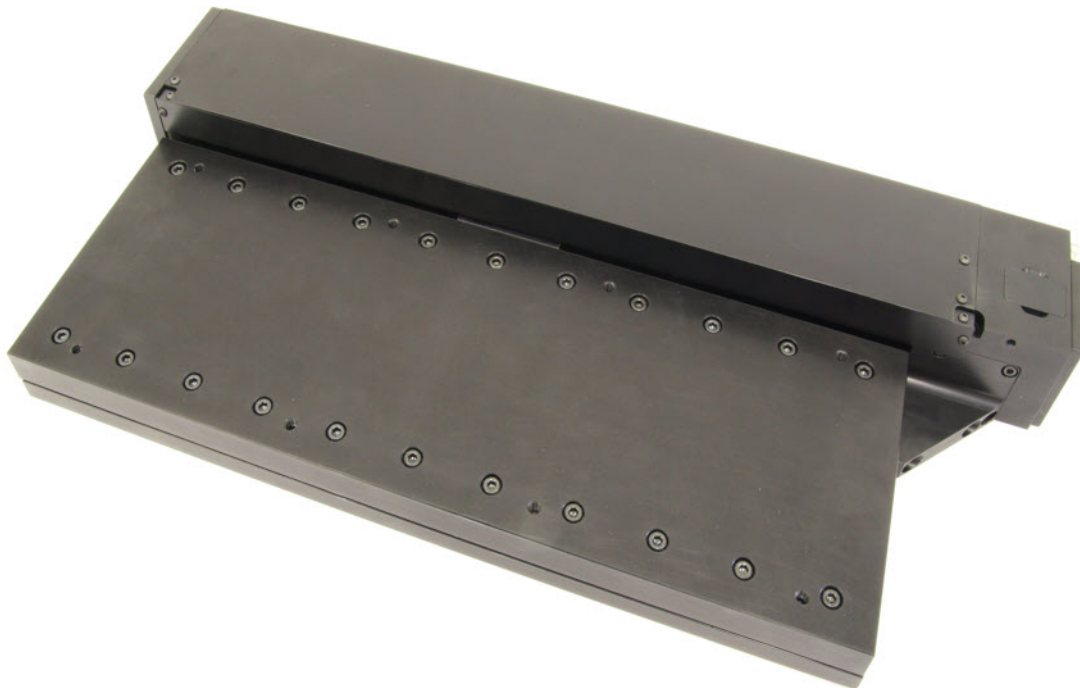
# Series 2750 Cross roller stage

Designed for those applications where height is at a premium, the Series 2750 cross roller stage is a precision stage for use where accuracy and quality are important.

Using high specification cross roller bearings and a precision ground ballscrew, these stages offer accurate control of position, well suited to microscope operation and optical positioning systems.

Limit and datum switches are fitted. All switch, motor and encoder connections are made through a 15 way D Type connector.

The Series 2750 is available with stepping motors, or servo motors with encoders as required.

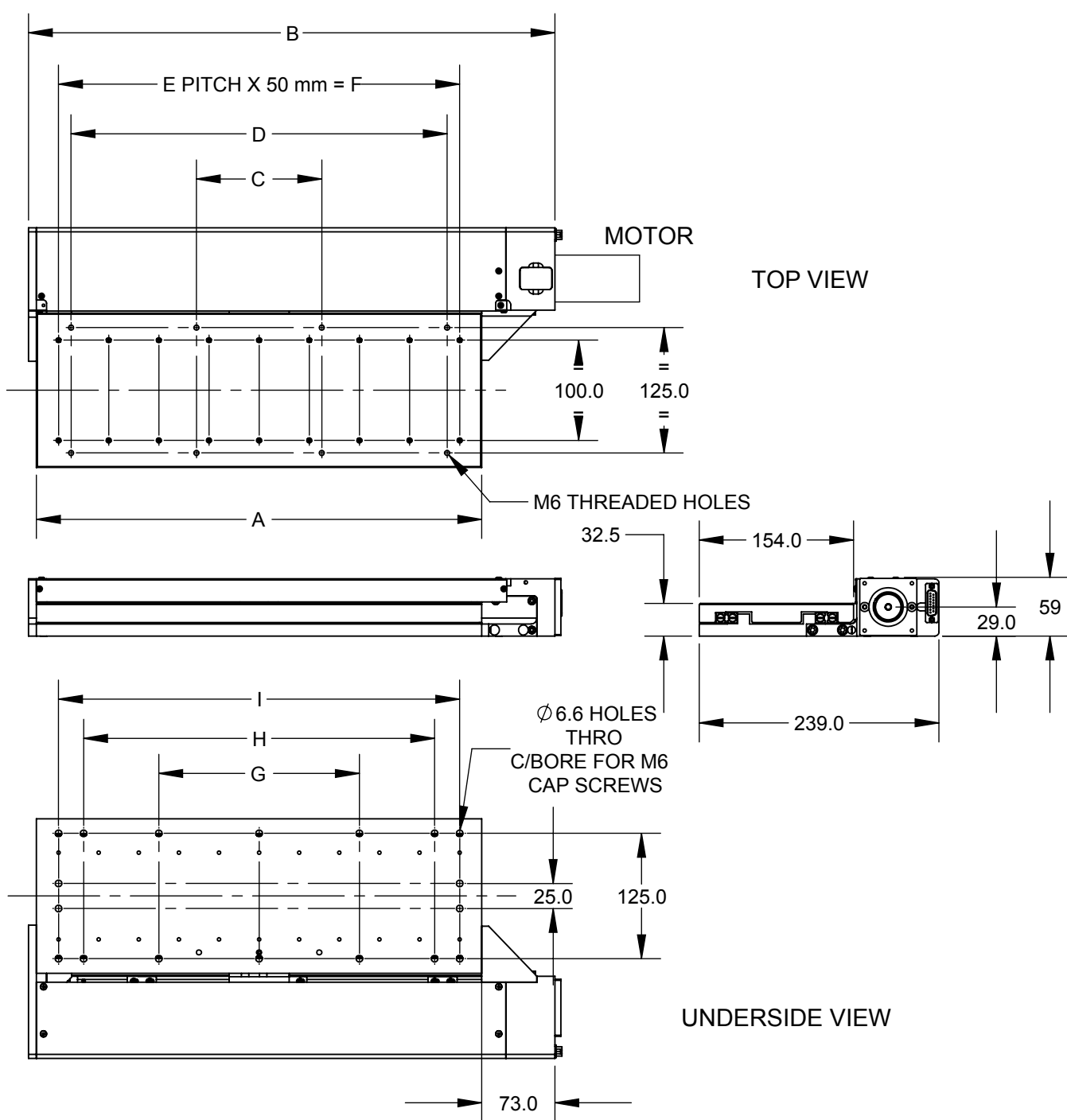


## OPTIONAL FEATURES

- stepping motor or servo motor with encoder

## SPECIFICATION

Travel mm	100	150	200	250	300
Ballscrew drive	G0, Precision ground, 2mm Pitch				
Flatness and straightness of travel	+/- 2 microns per 25mm of travel				
Bi-directional repeatability	+/- 2 microns				
Load capacity kg	35	35	35	35	35
Stage horizontal					
Stage vertical	20	20	20	20	20
Weight kg	4	5	6	7	8
Materials	Aluminium alloy and stainless steel				
Finish	Anodised and dyed black				



## DIMENSIONS

Travel mm	Dimensions mm								
	A	B	C	D	E	F	G	H	I
100	204	285	125	-	2	100	100	150	-
150	244	325	125	-	4	200	150	200	-
200	324	405	125	-	6	300	100	250	300
250	404	485	125	375	6	300	150	300	350
300	444	525	125	375	8	400	200	350	400

For connections, see page 38