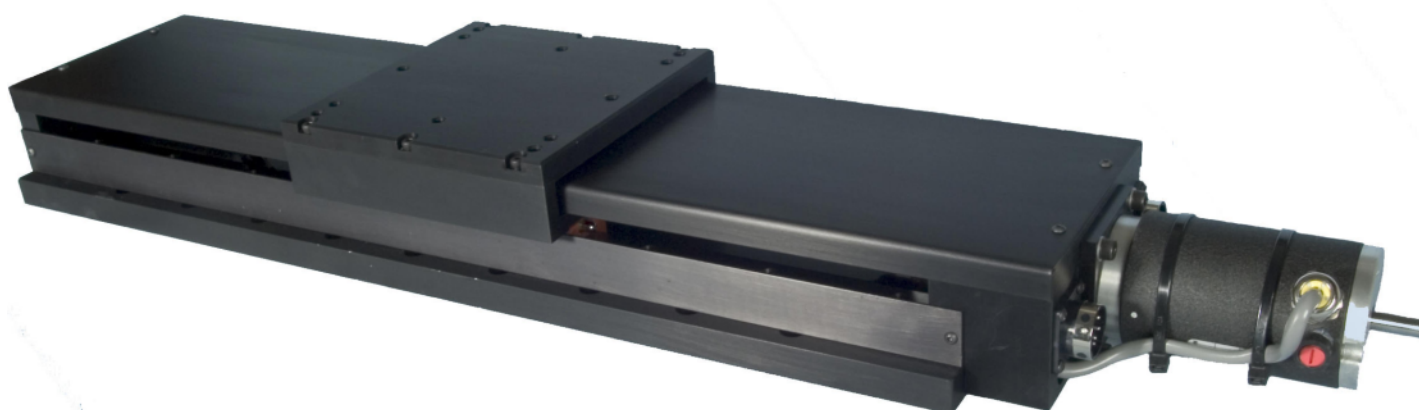


# Series 2500 Linear Stage

Using rail bearings and ground ballscrews, the Series 2500 stages offer good load-bearing capability and long travel with high accuracy and economy. Travel ranges of up to 500mm make the Series 2500 exceptionally versatile and the hard top cover provides protection for the stage and other equipment. Adjustable magnetic limit and datum switches are integral within the stage. Stepper or servo motors may be fitted.

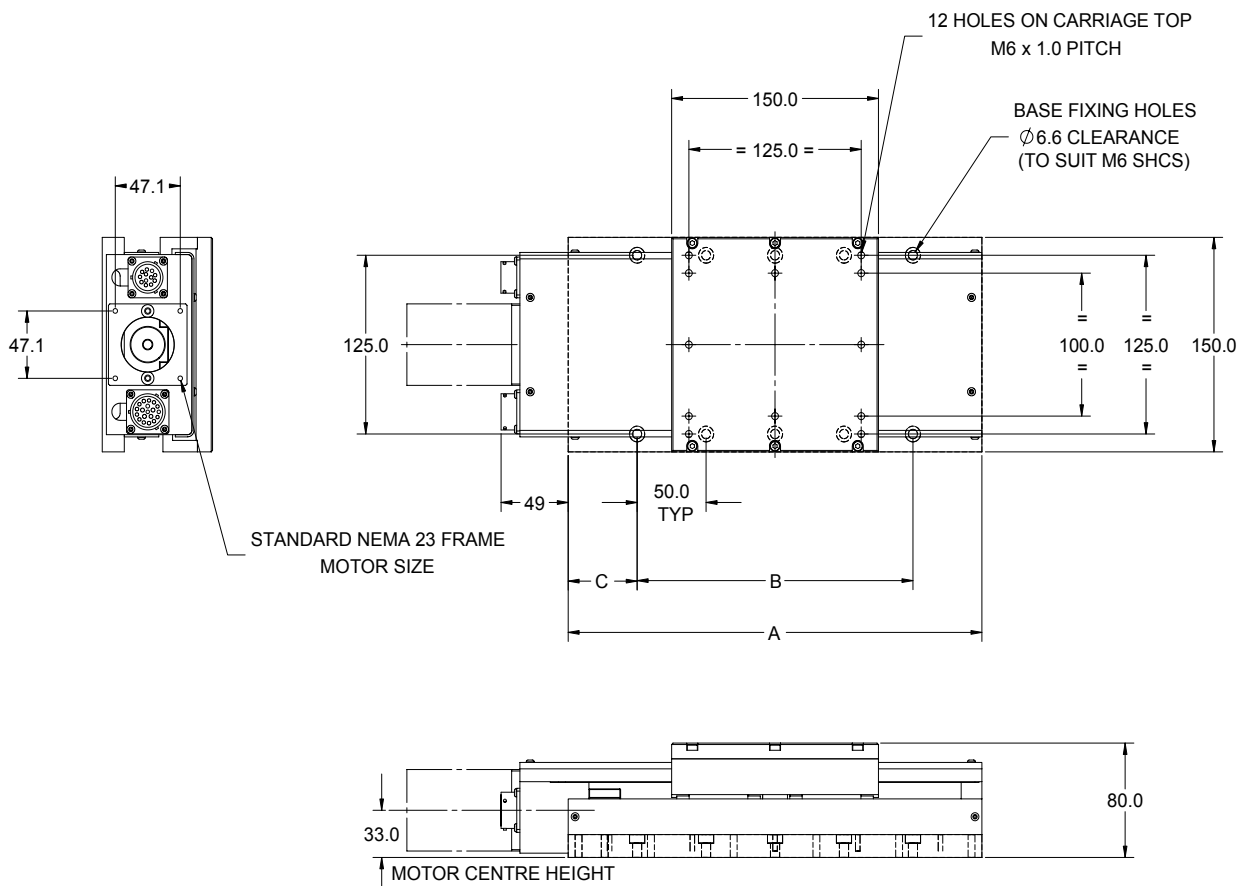


## OPTIONAL FEATURES

- Choice of Ballscrew and Leadscrew pitches
- Foldback motors
- Travel in excess of 500mm
- Brake

## SPECIFICATION

Travel mm	100	150	200	250	300	350	400	450
Ballscrew drive	G0, Precision ground, 2mm Pitch							
Flatness and straightness of travel	+/- 2 microns per 25mm of travel							
Bi-directional repeatability	+/- 2 microns							
Load capacity kg								
Stage horizontal	75	75	75	75	75	75	75	75
Stage vertical	35	35	35	35	35	35	35	35
Weight kg	3	4	6	7	9	11	13	15
Materials	Aluminium alloy and stainless steel							



## DIMENSIONS

Travel mm	Dimensions mm		
	A	B	C
100	300	200	50
150	350	200	75
200	400	300	50
250	450	300	75
300	500	400	50
350	550	400	75
400	600	500	50

For connections, see page 36