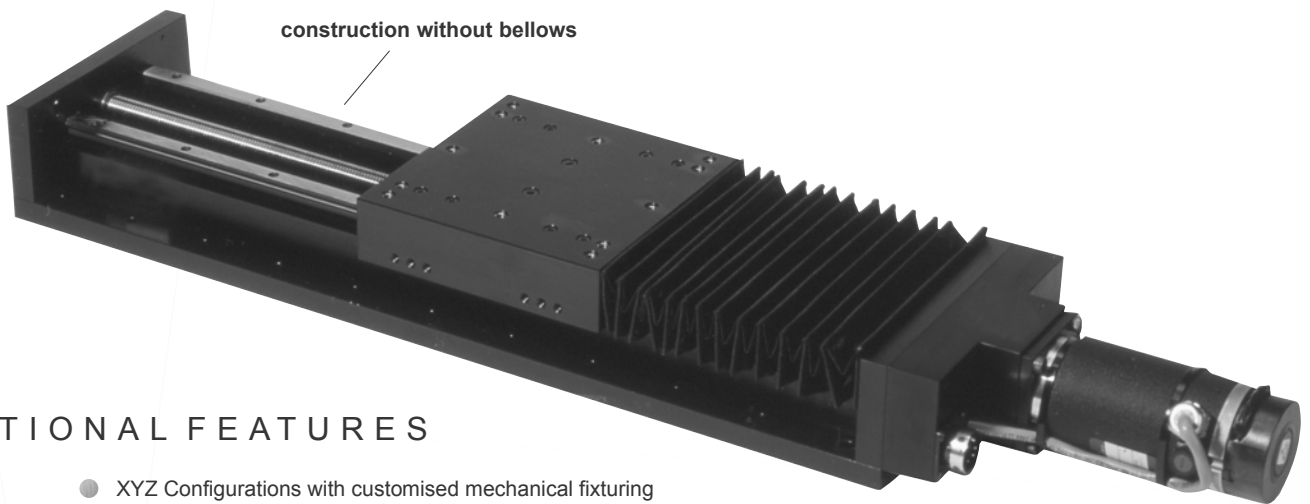


# Series 2000 Rail

Using rail bearings and ground ballscrews, the Series 2000 stages offer load-bearing capability, long travel with high accuracy, repeatability and economy. Travel ranges in excess of 500mm make the Series 2000 exceptionally flexible for special designs. Adjustable magnetic limit and datum switches are integral within the stage. Stepping motors or closed-loop servo motors with rear-mounted encoder or linear scale feedback are all compatible with the Series 2000 stages.

A wide range of MotionLink positioning indexers and controllers are available to control individual or multi-axis configurations. Complete mechanical fixture design is also available to specific requirements.

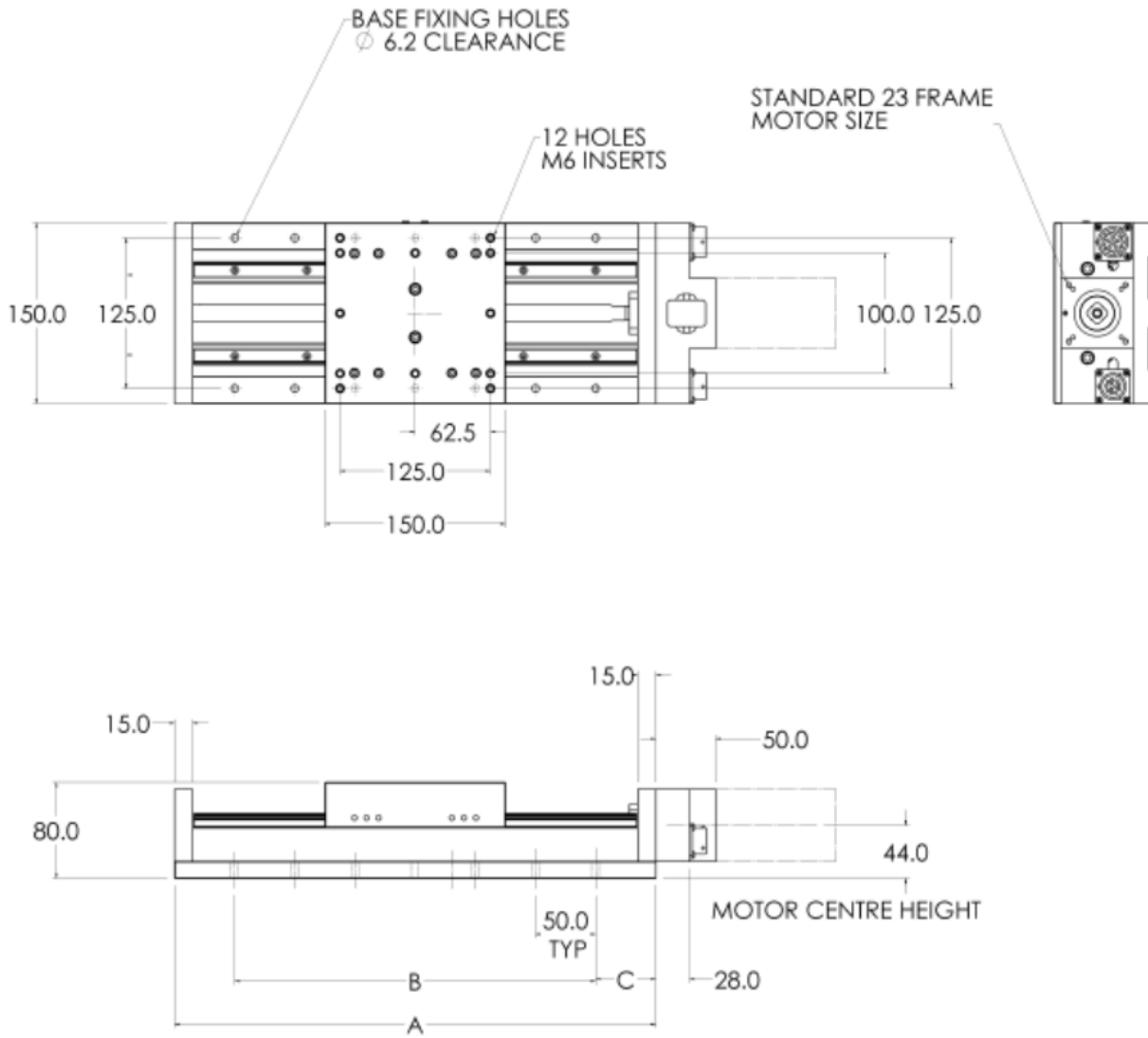


## OPTIONAL FEATURES

- XYZ Configurations with customised mechanical fixturing
- High accuracy linear encoders
- Foldback motors
- Travels in excess of 500mm
- Protective bellows covers (reduces travel)
- Mechanical or optical limit and datum switches
- 4, 5 or 10mm Pitch ballscrews
- Brake

## SPECIFICATION

Travel mm	100	150	200	250	300	350	400	450
Ballscrew drive	G0, Precision ground, 2mm Pitch							
Accuracy	2 microns per 25mm of travel							
Resolution	1 micron standard							
Flatness and straightness of travel	+/- 2 microns per 25mm of travel							
Bi-directional repeatability	+/- 2 microns (closed loop servo, motor-mounted encoder)							
Load capacity kg								
Stage horizontal	100	100	100	100	100	100	100	100
Stage vertical	50	50	50	50	50	50	50	50
Weight kg	3	4	6	7	9	11	13	15
Materials	Aluminium alloy and stainless steel							
Finish	Anodised and dyed black							



## DIMENSIONS

Max Travel mm	Dimensions mm			Travel with Bellows Option
	A	B	C	
100	300	200	50	75
150	350	200	75	100
200	400	300	50	150
250	450	300	75	190
300	500	400	50	225
350	550	400	75	260
400	600	500	50	300
450	650	500	75	325

For connections, see page 36