

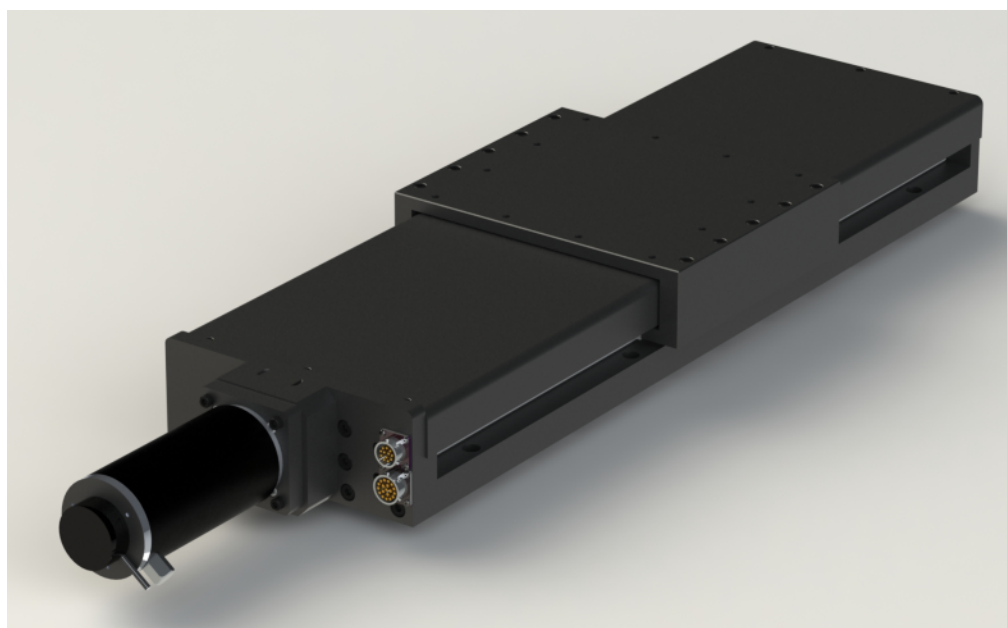
Series 12000HT Wide base, hard top

Where heavier loads requiring greater stability must be moved with accuracy and stable velocity, the Series 12000 stages will perform that task reliably.

With a 250mm base width, single and multi-axis configurations are available for demanding applications.

Using high load capacity four journal rail bearings and a high precision ground ballscrew, these stages offer accurate control of position suited to laser machining and optical positioning systems.

Limit and datum switches are fitted. Switch, motor and encoder connections are made through QM connectors. The Series 12000HT is available with either stepping motors or servo motors with encoders and internally fitted linear encoders are also an option. The hard top cover is fitted as standard.

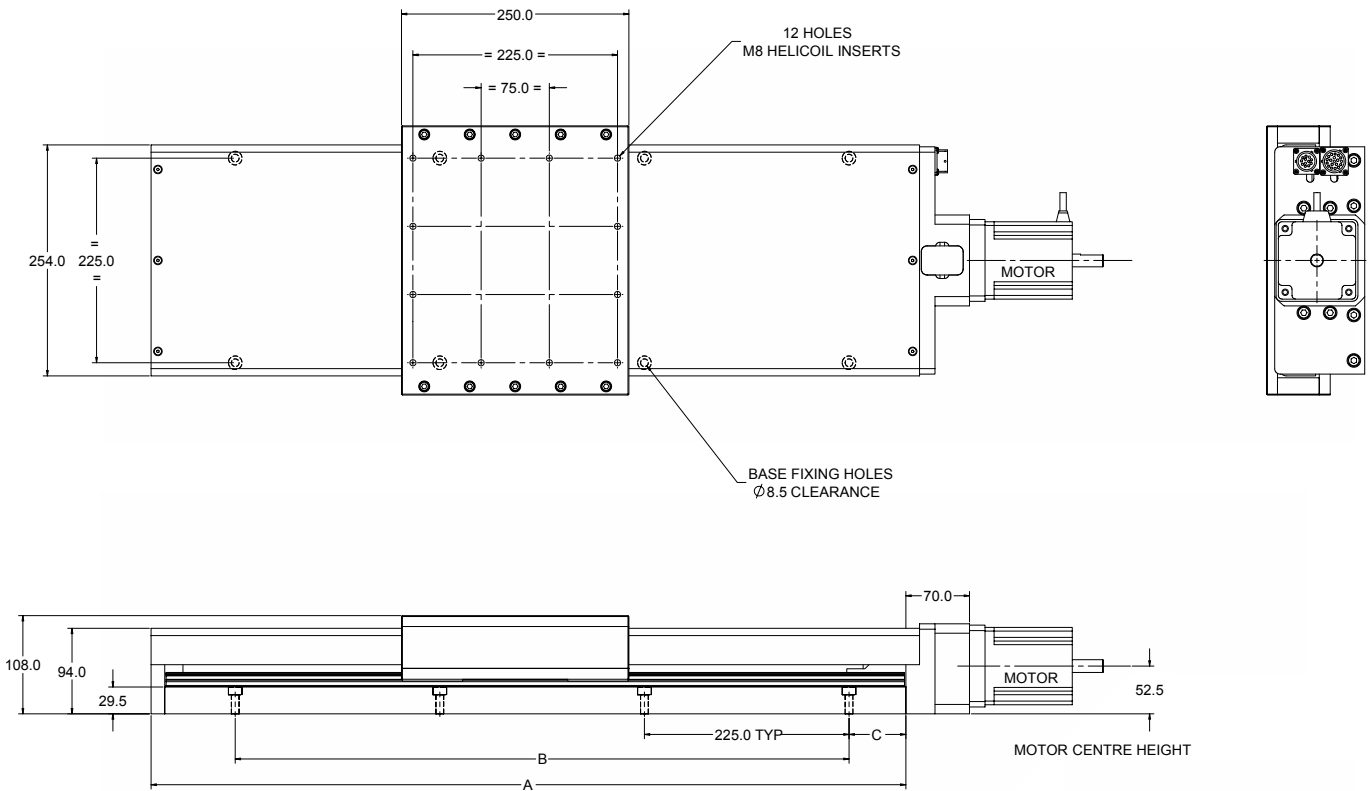


OPTIONAL FEATURES

- Linear encoder
- Brake
- Fold back motor

SPECIFICATION

Travel mm	200	300	400	500	600	700	800	900	1000
Ballscrew drive	G0, Precision ground, 10mm pitch standard								
Accuracy	2 microns per 25mm of travel								
Resolution	1 micron standard								
Flatness and straightness of travel	+/- 2 microns per 25mm of travel								
Bi-directional repeatability	+/- 2 microns (closed loop servo, motor-mounted encoder)								
Load capacity kg									
Stage horizontal	80	80	80	80	80	80	80	80	80
Stage vertical	40	40	40	40	40	40	40	40	40
Weight kg	21.5	25	28.5	32	35.5	39	42.5	46	49.5
Materials	Aluminium alloy and stainless steel								
Finish	Anodised and dyed black								



NOTE : WHERE NUMBER OF BASE FIXING HOLES IS EVEN
FOUR ADDITIONAL HOLES ARE INSET ABOUT CENTRE LINE
TO ALLOW X-Y MOUNTING 225mm x 225mm

DIMENSIONS

Max travel (with bellows) mm	Dimensions mm		
	A	B	C
200	565	450	50
300	690	450	112.5
400	815	675	62.5
500	940	675	125
600	1065	900	75
700	1190	1125	25
800	1315	1125	87.5
900	1440	1350	37.5
1000	1565	1350	100

For connections, see page 36