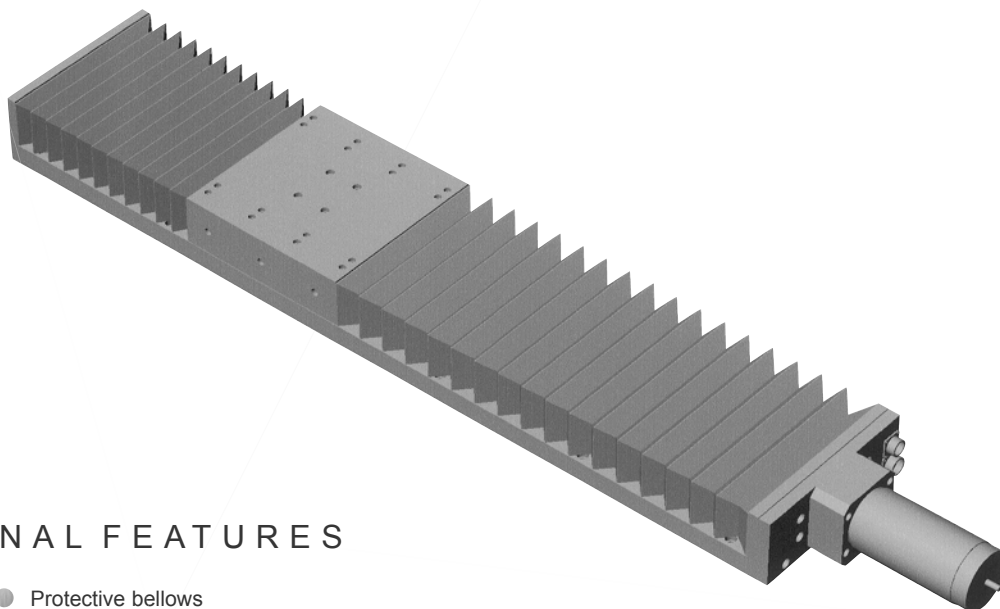


# Series 12000 Wide base

Where heavier loads requiring greater stability must be moved, with accuracy and stable velocity, the Series 12000 stages will perform that task reliably. With a 250mm base width, single and multi-axes configurations are available for demanding applications.

Using high load capacity, four journal rail bearings and a high precision ground ballscrew, these stages offer accurate control of position suited to laser machining and optical positioning systems. Limit and Datum switches are fitted. Switch, motor and encoder connections are made through QM connectors. Available with stepping or servo motors with encoders. Linear encoders internally fitted are an option. Protective bellows fitted as standard.

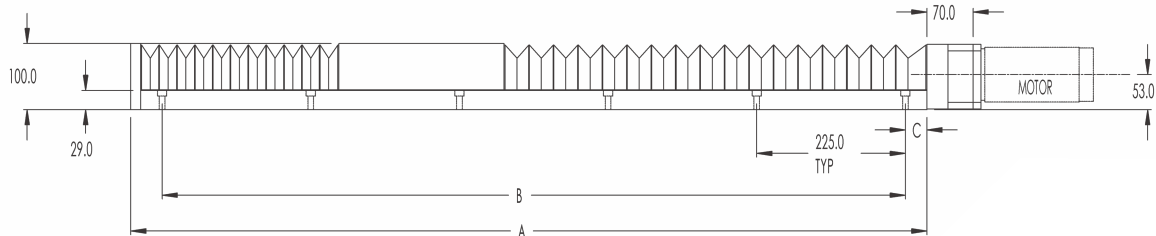
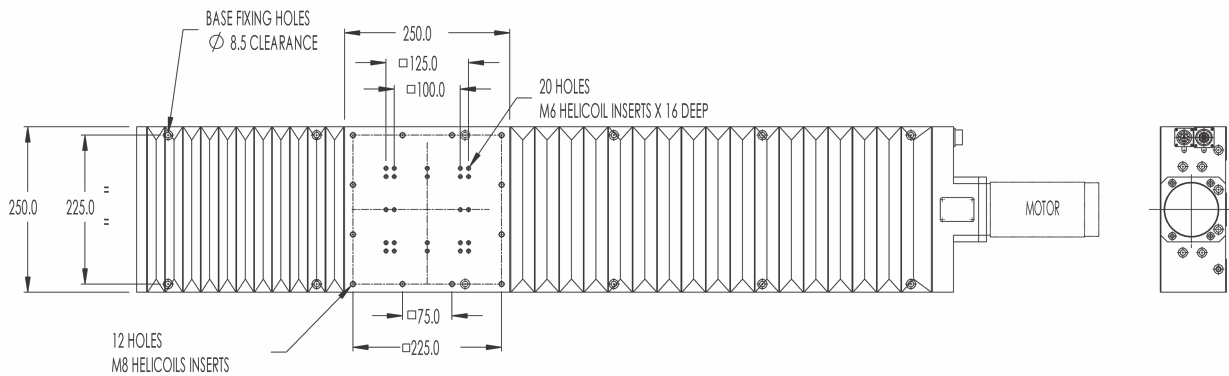


## OPTIONAL FEATURES

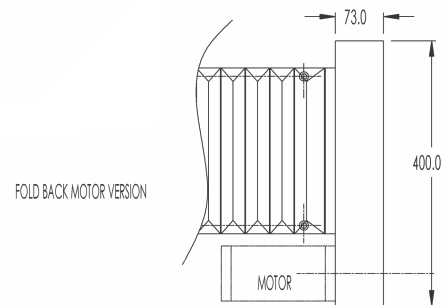
- Protective bellows
- Linear encoder
- Brake
- Fold back motor

## SPECIFICATION

Travel mm	200	300	400	500	600	700	800	900	1000
Ballscrew drive	G0, Precision ground, 10mm pitch standard								
Accuracy	2 microns per 25mm of travel								
Resolution	1 micron standard								
Flatness and straightness of travel	+/- 2 microns per 25mm of travel								
Bi-directional repeatability	+/- 2 microns (closed loop servo, motor-mounted encoder)								
Load capacity kg									
Stage horizontal	150	150	150	150	150	150	150	150	150
Stage vertical	50	50	50	50	50	50	50	50	50
Weight kg	21.5	25	28.5	32	35.5	39	42.5	46	49.5
Materials	Aluminium alloy and stainless steel								
Finish	Anodised and dyed black								



NOTE : WHERE NUMBER OF BASE FIXING HOLES IS EVEN  
FOUR ADDITIONAL HOLES ARE INSERTED ABOUT CENTRE LINE  
TO ALLOW X-Y MOUNTING 225mm X 225mm



## DIMENSIONS

Max travel (with bellows) mm	Dimensions mm		
	A	B	C
200	565	450	50
300	690	450	112.5
400	815	675	62.5
500	940	675	125
600	1065	900	75
700	1190	1125	25
800	1315	1125	87.5
900	1440	1350	37.5
1000	1565	1350	100

For connections, see page 36