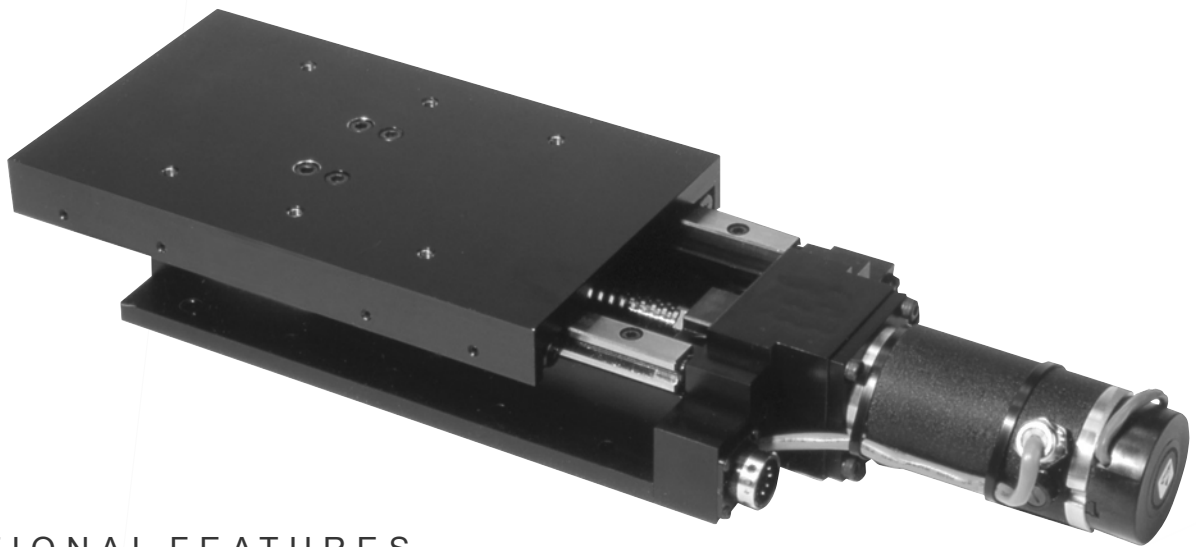


# Series 1000 Cross roller

A proven, rugged range of linear stages with travel range from 50 to 300mm. High accuracy ground ballscrews and cross-roller bearings are standard. Adjustable magnetic limit and datum switches are integral within the stage assembly. Stepping motors or closed loop servo motors, with rear-mounted encoders or linear scales, provide position feedback. 250mm width option for greater stability is available. A wide range of MotionLink positioning indexers and controllers are available to control individual stages or multi axis configurations. Complete mechanical fixtures are available for specific applications.

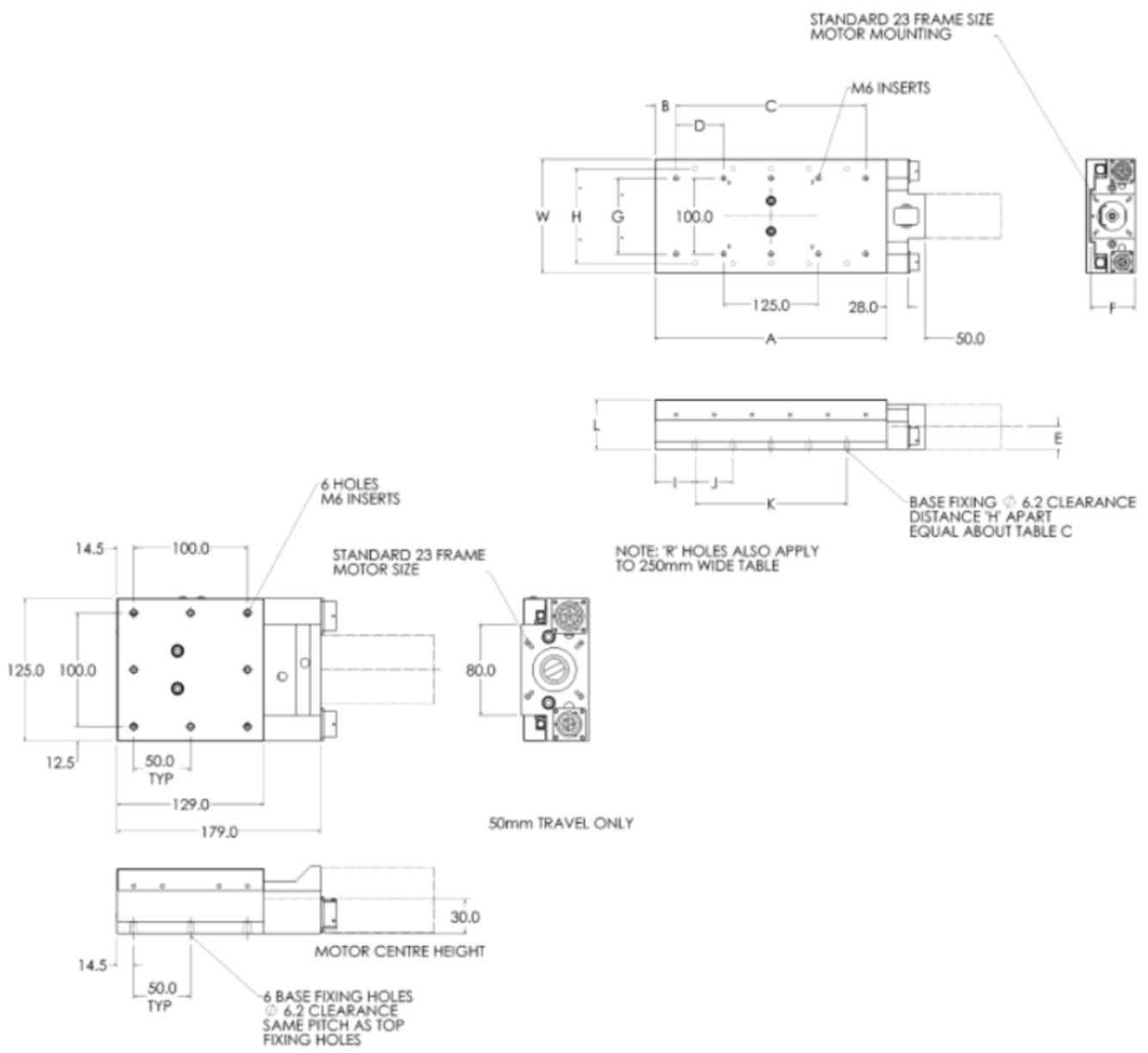


## OPTIONAL FEATURES

- XYZ Configurations with customised mechanical fixturing
- High accuracy linear encoders
- Wide platform bearings for fully supported loads over entire travel area
- Mechanical cam or optical switches
- 4 or 5mm Pitch ballscrews
- 250mm width for greater stability
- Brake

## SPECIFICATION

Travel mm	50	75	100	150	200	250	300
Ballscrew drive	G0, Precision ground, 2mm Pitch						
Accuracy	2 microns per 25mm of travel						
Resolution	1 micron standard						
Flatness and straightness of travel	+/- 2 microns per 25mm of travel						
Bi-directional repeatability	+/- 2 microns (closed loop servo, motor-mounted encoder)						
Load capacity kg							
Stage horizontal	40	40	90	100	109	118	127
Stage vertical	20	20	45	50	54	59	63
Weight kg	3	3.5	4	6	7	9	11
Materials	Aluminium alloy and stainless steel						
Finish	Anodised and dyed black						



## DIMENSIONS

Max Travel mm	W=150 Dimensions mm											
	A	B	C	D	E	F	G	H	I	J	K	L
50	Dimensions as per drawing											
75	156	15.5	125	62.5	30	59	100	125	28.0	50.0	100	65
100	206	40.5	125	62.5	30	59	100	125	28.0	50.0	150	65
150	256	66.5	125	62.5	30	59	100	125	28.0	50.0	200	65
200	306	28.0	250	62.5	30	59	100	125	53.0	50.0	200	65
250	406	15.5	375	62.5	30	59	100	125	53.0	50.0	300	65
300	456	40.5	375	62.5	30	59	100	125	28.0	50.0	400	65

Max Travel mm	W=250 Dimensions mm											
	A	B	C	D	E	F	G	H	I	J	K	L
100	356	65.5	225	112.5	34	63	200	225	78.0	100	200	75
150	356	65.5	225	112.5	34	63	200	225	78.0	100	200	75
200	356	65.5	225	112.5	34	63	200	225	78.0	100	200	75
250	406	90.5	225	112.5	34	63	200	225	103	100	200	75
300	456	115.5	225	112.5	34	63	200	225	23.0	100	400	75
350	556	53.0	450	112.5	34	63	200	225	78.0	100	400	75
400	606	78.0	450	112.5	34	63	200	225	103	100	400	75

For connections, see page 36