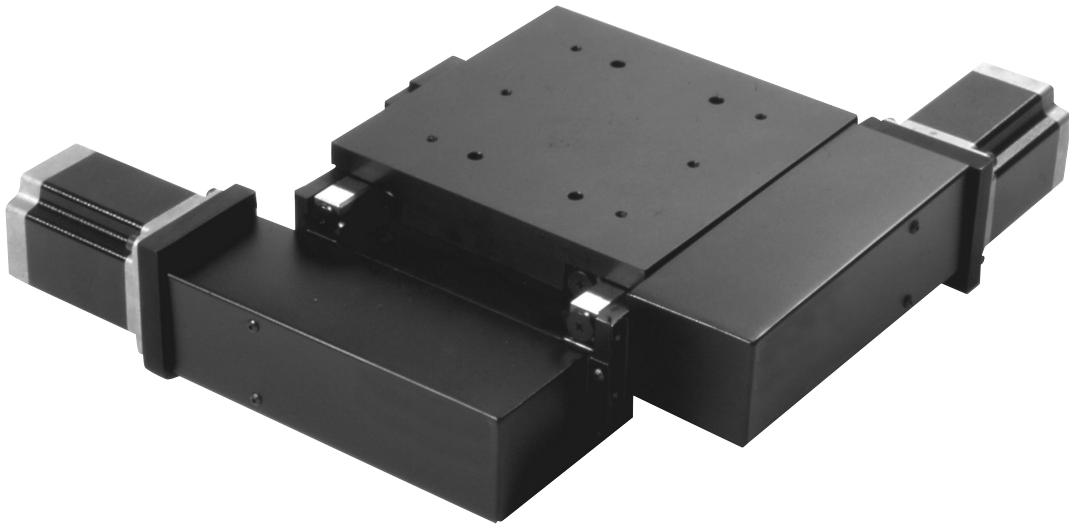


Series 29000 Low cost, integral XY

For applications where a lower cost, low profile XY stage with good performance is required, the Series 29000 offers a compact design with those characteristics.

Using ground ballscrews or optional leadscrews for economy, this compact XY stage is available in 50x50 or 100x100mm travels. Stepping motors are standard but servo motors are optional. Crossed roller bearings are used for good stability, within an economical design.

Limit and Datum switches are optional. A linear encoder with integral Limit and Datum switch functions is standard.

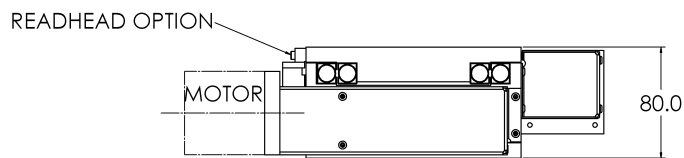
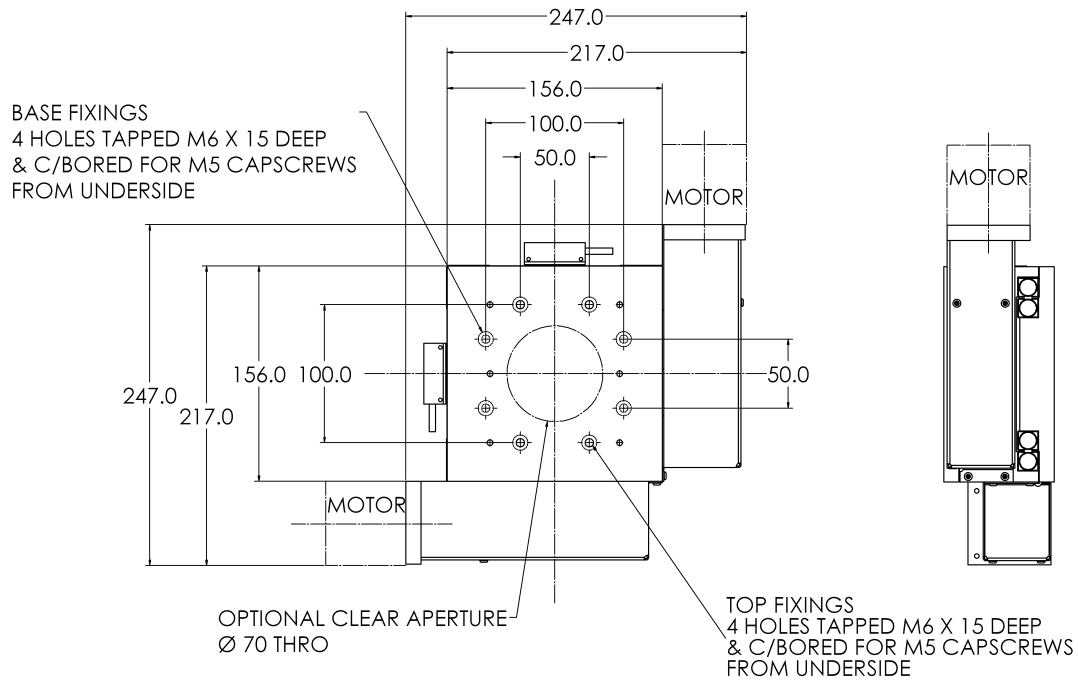


OPTIONAL FEATURES

- Discrete Limit and Datum switches
- 2, 4 or 5mm pitch ballscrews
- Motor-mounted encoder
- Clear 70mm aperture

SPECIFICATION

Travel mm	50x50	100x100
Drive	G0 Ballscrew, ground, 1mm pitch OR Leadscrew, 1mm pitch	
Accuracy per 25mm travel	2 microns	15 microns
Resolution	1 micron	1 micron
Flatness and straightness per 25mm of travel	+/- 1 micron	+/- 1 micron
Load capacity kg		
Stage horizontal	40	40
Stage vertical	20	20
Weight kg	7.5	9
Materials	Aluminium alloy and stainless steel	
Finish	Anodised and dyed black	



DIMENSIONS

Travel XY mm	Dimensions mm		
	A	B	C
50 XY	156	217	247
100 XY	206	267	297