

Series 11000 Protected, with a hard top

The Series 11000 is designed for applications where the mechanism must have optimum protection from the operational environment.

The Hard-Top design ensures protection without the use of bellows. A protective tape under tension, rolls around an internal capstan within the table top and seals the normal gap between upper and lower sections.

The rail bearing system has 4 preloaded journals for high load capacity. A 5mm pitch G0 ballscrew is used as standard. Adjustable Limit and Datum switches are available within the stage. Stepping or servo motors with rear encoders are fitted as required.

High accuracy linear scale encoders may be fitted within the Series 11000 assembly. All switch, motor and encoder connections are made through QM connectors.

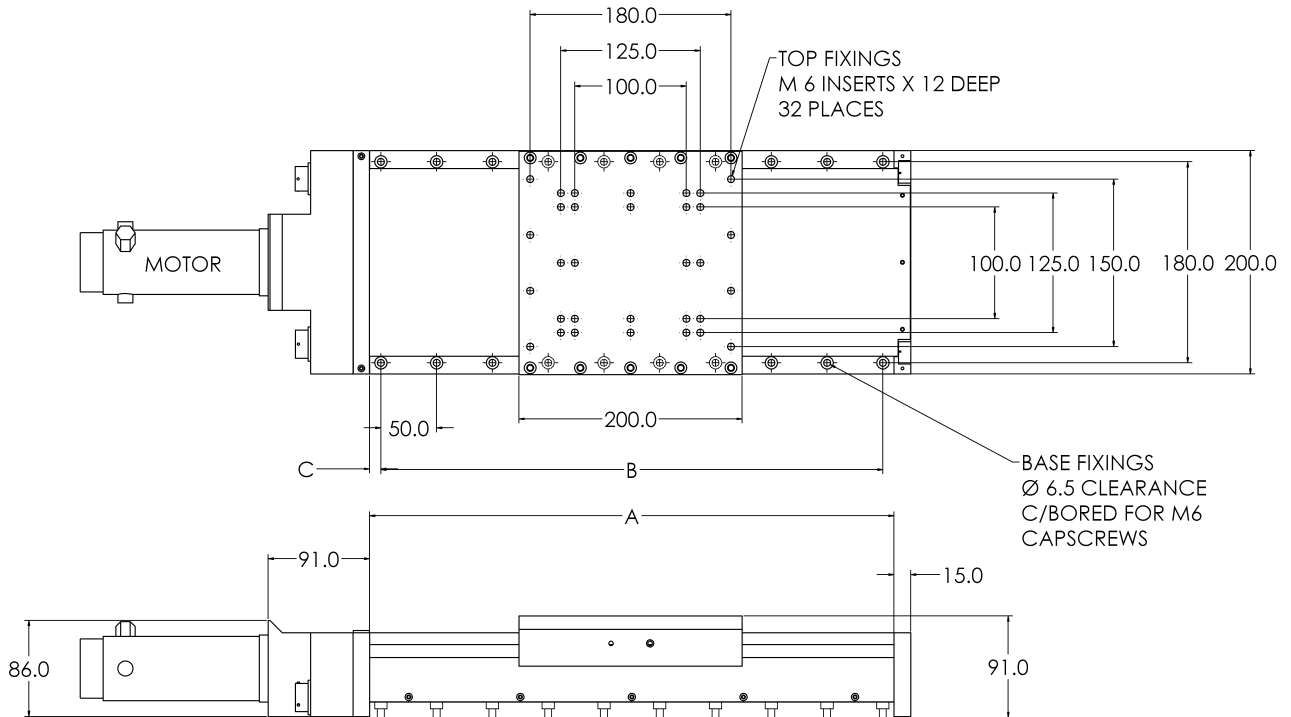


OPTIONAL FEATURES

- Linear encoder
- Air pressure fitting
- Brake
- Side mounted motor

SPECIFICATION

Travel mm	100	150	200	250	300	350	400	450	500
Ballscrew drive	G0, Precision ground, 5mm pitch (2, 4 and 10mm optional)								
Accuracy	2 microns per 25mm of travel								
Resolution	1 micron standard (other resolutions available)								
Flatness and straightness of travel	+/- 2 microns per 25mm of travel								
Bi-directional repeatability	+/- 1 micron (close loop servo, motor-mounted encoder)								
Load capacity kg									
Stage horizontal	100	100	100	100	100	100	100	100	100
Stage vertical	50	50	50	50	50	50	50	50	50
Weight kg	16.5	17	17.5	18	18.5	19	19.5	20	20.5
Materials	Aluminium alloy and stainless steel								
Finish	Anodised and dyed black								



DIMENSIONS

Max Travel mm	W=200 Dimensions mm		
	A	B	C
100	320	250	35
150	370	350	10
200	420	350	35
250	470	450	10
300	520	450	35
350	570	550	10
400	620	550	35
450	670	650	10
500	720	650	35

For connections, see page 40